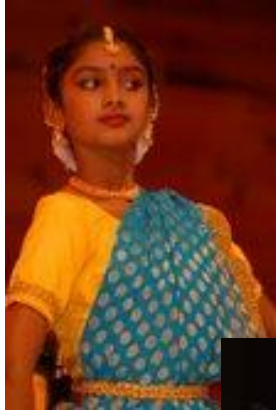




Raag-Rang Presents

“Kal Ke Kalakar”
(Budding Artists of Future)

Featuring



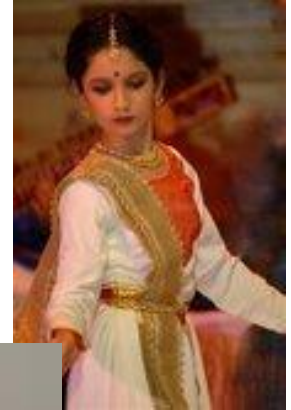
Veena Bhagavati
Kathak Trio

Focus



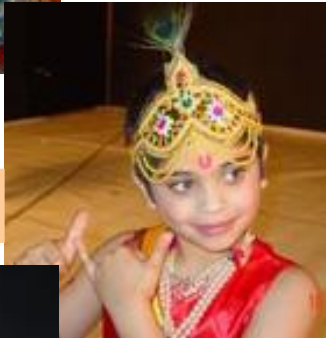
Rohan Prabhudesai
Harmonium Solo

Poise



Ruchita Zaparde
Kathak Trio

Commitment



Shiv Nadkarni
Kathak Trio

Talent



Rohan Misra
Sarangi Solo

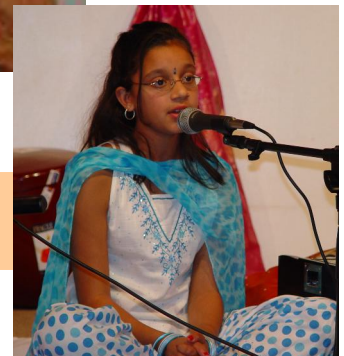
Determination

*Providing
a
Platform
to*



Tejas Tope
Tabla Solo

Promising Young Local Artists



Charmie Mehta
Hindustani Vocal

Date: Sunday, October 11th, 2009
Time: 3:00 - 5:30 PM (Sharp)

Venue: Universal Unitarian Congregation of Princeton (Fahs Theater)
50 Cherry Hill Road, Princeton, NJ 08540

Admission: Non-Members: \$12 (Kids below 10 Years: \$7)
Raag-Rang Members: \$10 (Kids below 10 Years: \$5)

For details Contact: 908-429-1120, 609-890-4890, 908-240-8289. RSVP will be appreciated.
Email: bhawmikm@gmail.com, mayuresh.khare@gmail.com, dh92@optonline.net

Directions

From Route 1 (North or South): Take the Washington Road exit into Princeton. At the fourth light turn left at the light onto Nassau St. and go three lights to the intersection of Nassau and Rt. 206. Turn right onto Rt. 206 North. At the third light take a left onto Cherry Hill Rd. The Unitarian Universalist Congregation will be immediately on the left.

From the North: Take Route 206 south towards Princeton. Travel 3.8 miles past the intersection of routes 518 and 206 to the light at Cherry Hill Road (which is the fourth light). Turn right onto Cherry Hill Road. The Unitarian Universalist Congregation is immediately on the left.

Directions from South Jersey via I-295: Take Rte. I-295 North until it turns into I-95 South (by Rte. 1 New Brunswick exit). Continue on I-95 South (also still I-295 North!) for 2 exits (~2 miles). Take Exit 7B onto Rte. 206 North. Continue for ~6 miles, to a traffic light where Rte. 206 continues to the left. (straight ahead turns into Nassau St. / Rte 27). Follow Rte. 206 North, then make left at 3rd light (~1 mile) onto Cherry Hill Rd. Unitarian Universalist Congregation is immediately on left.